

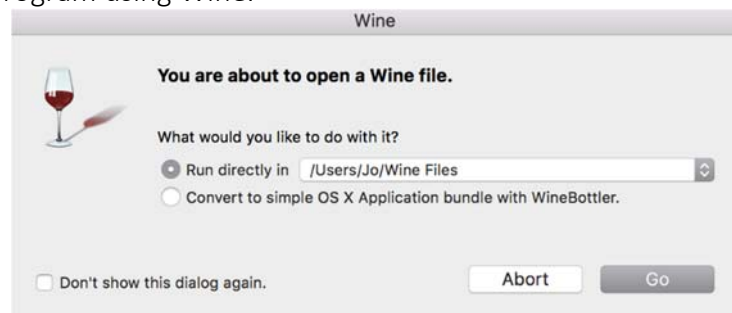
CSPro installation and notes for Mac computers

CSPro does not run on Mac computers. It is possible to run this program using a free application call Wine, which allows Windows applications to be opened in the Mac environment. To do so,

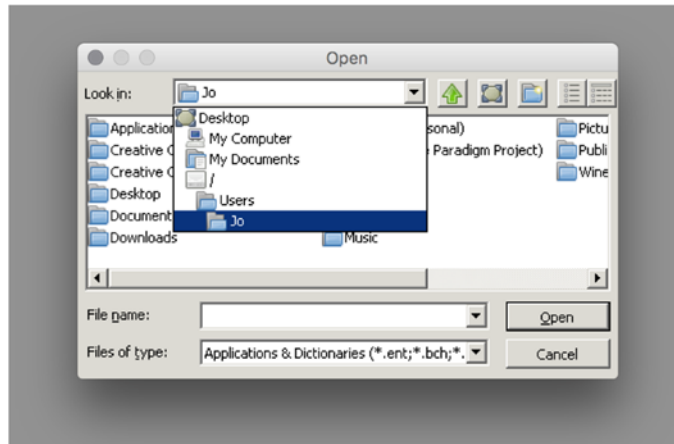
1. Make sure your Mac OS is up to date and running OS 10.6 or higher
2. Install WineBottler and Wine through this link: <http://winebottler.kronenberg.org/>. When you click on the download link, you will be directed to an advertisement page. Click on the link in the upper right hand corner for 'Skip Ad' and you will be redirected to the download page, where the file for both applications will automatically begin downloading.
 - a. Select both items and drag them to the applications folder



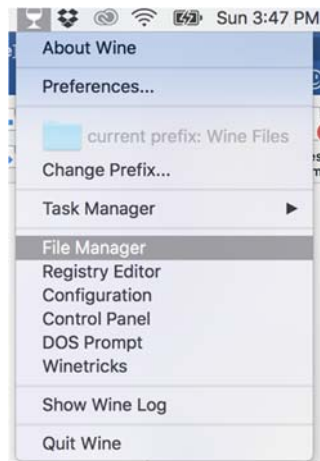
3. Click on the downloaded CSPro file. A dialogue box will automatically open that asks you to run the program using Wine.



4. Follow the installation instructions provided for Windows users. To access the CSPro files, click on File > Open and look for your username in the dropdown menu. Your files stored on your Mac will all be accessible from this screen. Select the CSPro files and proceed with instructions for windows users.

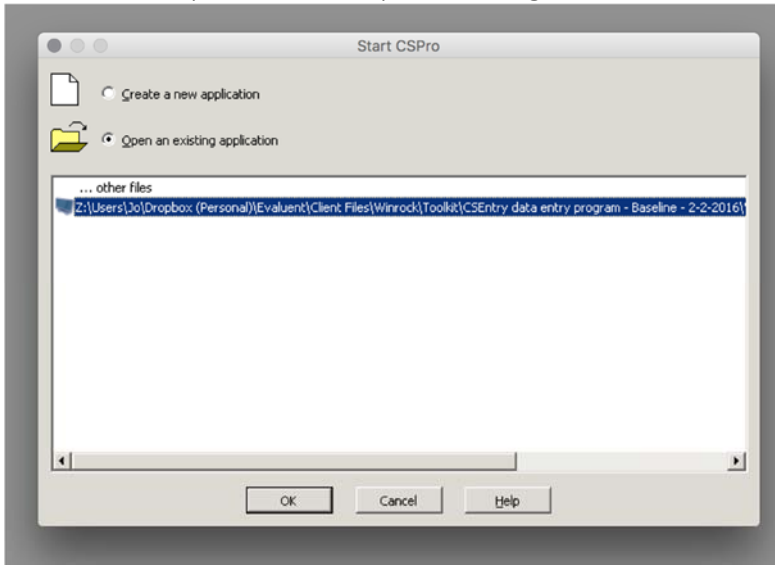


5. To continue to access CSPro and continue existing work within the application, select Wine from your applications. This will create a Wine icon on your toolbar. Select File Manager to navigate to CSPro.

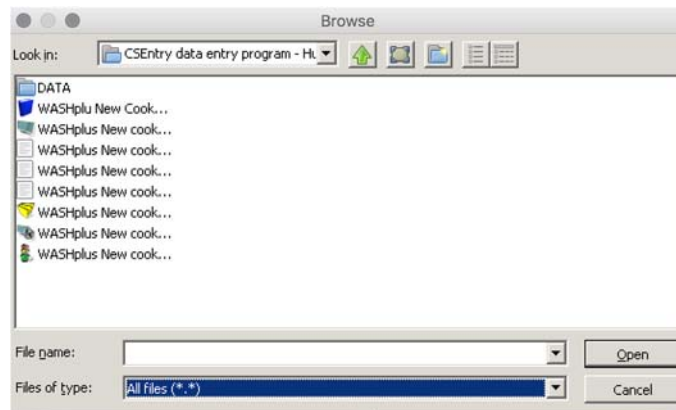
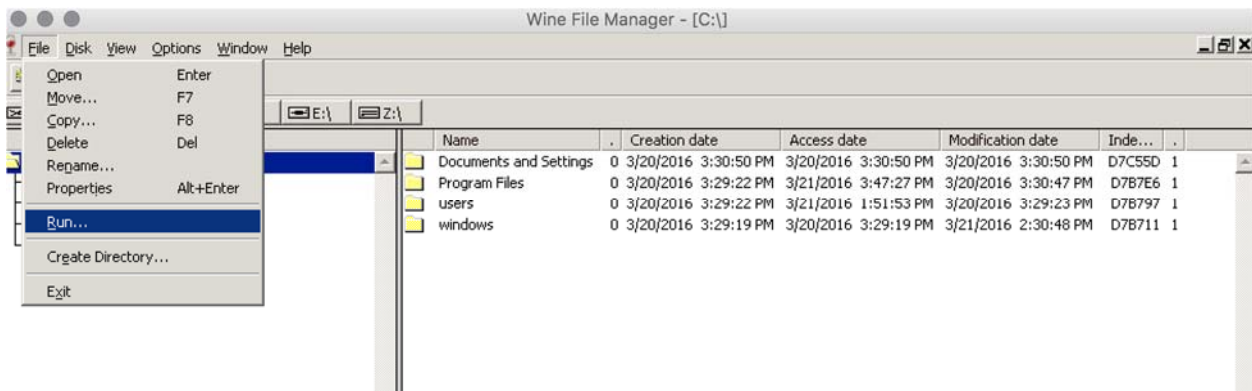


6. Within the File Manager, navigate to Wine Files > drive_c > Program Files > CSPro 6.2 and select the CSPro.exe icon to open.

7. Within CSPro, you can select your existing file to continue working.



8. If you want to open files directly using Wine, navigate to the file using the File Manager within wine. From the Wine File Manager, select File > Run and then Browse for the specified file. To ensure that you will see the specified file, select 'All files' from the 'Files of type' dropdown at the bottom of the screen.



9. You can open exported files from CSPro directly in your Mac interface, but you need Microsoft Word and Excel for it to function. For the exported data, this can be opened directly in Excel using the process defined. Rich text format outputs of data tables can be viewed in Microsoft Word. To do so, right click on the file name, select 'Open with' and choose Word from the available options.

